

77310

TANK CARE
SPIN-ON / TANK-TOP

Retourfilter
Filtre de retour
Return line filter

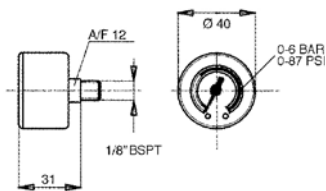


	7 BAR
	10 BAR
	21 BAR
	max. 280 LPM (Visc. = 30cSt)
	-25/+110°C
	ΔP MAX. 3 BAR
	By-pass 1,7 BAR (±10%)
	G3/4" ÷ G1.1/2"
	P10-P25 A06-A12-A25
	HH-HL-HM-HR-HV-HG, acc. ISO 6743/4

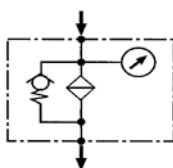
Filter met element - Filtre avec élément - Filter with element										
	LPM ΔP ± 0,3 BAR Medium: Visc. = 30 cSt - s.g. 0,9 ΔP Visc. 22cSt. Δ 100 cSt. + HH Computer Aided Filter design (CAF)									REF.
	P10μ XXX=P10	P25μ XXX=P25	A07μ XXX=A06	A12μ XXX=A12	A21μ XXX=A25					
11	70	70	70	70	70					77310-1112-XXX
12	76	76	70	70	70					77310-1212-XXX
21	250	320	130	170	220					77310-2124-XXX
22	280	280	160	160	240					77310-2224-XXX

REF. 77310

Visueel
Visuel
Visual
SERIE 30

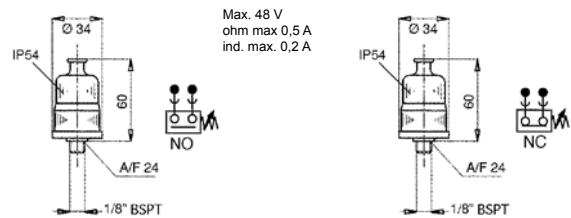


REF.
77485-30

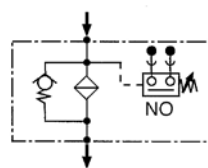


REF. 77310

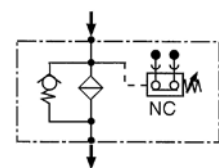
Elektrisch
Électrique
Electrical
SERIE 40 & 41

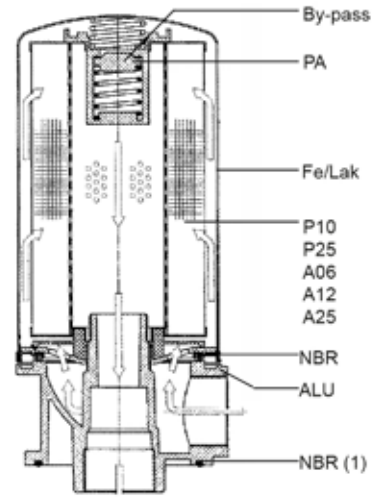
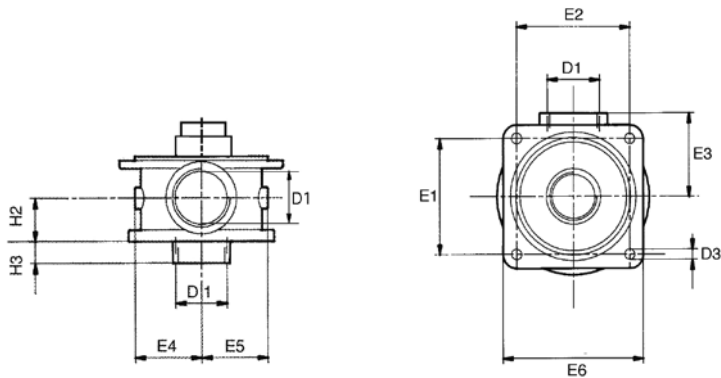




MM% ±10%	REF.
1,5 BAR	1171-20-002


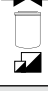



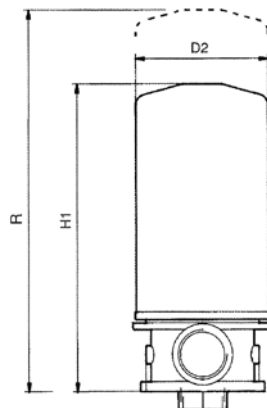
MM% ±10%	REF.
1,5 BAR	1171-23-002






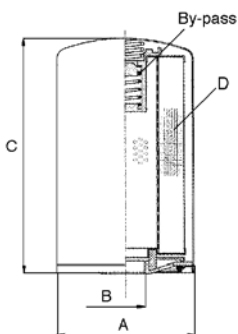
 13.36		REF.
11&12	NBR 1	77310-11-OR
21&22	NBR 1	77310-21-OR


Filterkop: zonder element, indicator enz. - Tête de filtre: sans élément, indicateur etc. - Filterhead: without element, indicator etc.																	
D1 BSPP	D3	H2	H3	E1	E2	E3	E4	E5	R					 kg		 Serie	REF.
G3/4"	7	25	18	70	70	50	38	38	211					0,3	11&12	30/40/41	77310-0012
G1.1/2"	9	36	18	100	100	72	56	56	282					0,8	21&22	30/40/41	77310-0024



Filter met element / Filtre avec élément Filter with element					
D2	H1	R		REF.*	
95	196	211	0,4	77310-1112-XXX	
95	241	256	0,4	77310-1212-XXX	
130	252	282	2,1	77310-2124-XXX	
130	297	327	2,1	77310-2224-XXX	

*  13.36



Element - Élément - Element										
	A	B BSPP	C	D (cm2) P10-P25	REF*		D (cm2) A06÷A25	REF*		
					P10µ	P25 µ		A07µ	A12µ	A21µ
11	96,5	G3/4"	146	2.140	77310-11-P10	77310-11-P25	1.225	77310-11-A06	77310-11-A12	77310-11-A25
12	96,5	G3/4"	191	3.630	77310-12-P10	77310-12-P25	1.500	77310-12-A06	77310-12-A12	77310-12-A25
21	129	G1.1/4"	181	4.450	77310-21-P10	77310-21-P25	2.295	77310-21-A06	77310-21-A12	77310-21-A25
22	129	G1.1/4"	226	5.890	77310-22-P10	77310-22-P25	3.495	77310-22-A06	77310-22-A12	77310-22-A25