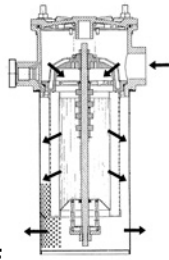
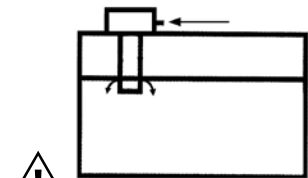


77303

TANK CARE

TANK-TOP

Retourfilter
Filtre de retour
Return line filter



INSIDE / OUTSIDE

	10 BAR
	15 BAR
	30 BAR
	max. 900 LPM (Visc. = 30cSt)
	-25/+110°C
	ΔP MAX. 10 BAR
	By-pass 1,5 BAR (±10%) (0,8 BAR)
	G3/4" ÷ G1.1/2" SAE 3000 2.1/2"
	P10 A03-A06-A12-A25 M60
	HH-HL-HM-HR-HV-HG, acc. ISO 6743/4

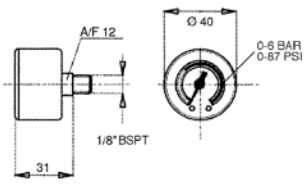
Filter met element - Filtre avec élément - Filter with element								REF.
	P10μ XXX=P10	A05μ XXX=A03	A07μ XXX=A06	A12μ XXX=A12	A21μ XXX=A25	M60μ XXX=M60		
	→ Q → LPM ΔP ± 0,3 BAR Medium: Visc. = 30 cSt - s.g. 0,9 ΔP Visc. 22cSt. Δ 100 cSt. + HH Computer Aided Filter design (CAF)							
11	120	20	30	50	120	140		77303-1116-XXX
11	140	20	40	60	120	150		77303-1120-XXX
12	140	30	50	80	120	140		77303-1216-XXX
12	170	30	56	90	140	180		77303-1220-XXX
13	140	40	80	100	140	140		77303-1316-XXX
13	200	40	80	100	160	220		77303-1320-XXX
14	140	60	120	40	140	140		77303-1416-XXX
14	240	60	110	110	140	220		77303-1420-XXX
22	340	110	180	260	300	340		77303-2224-XXX
23	340	120	260	320	340	340		77303-2324-XXX
24	340	200	340	340	340	340		77303-2424-XXX
31	700	120	260	400	600	900		77303-3140-XXX
32	700	150	300	420	700	900		77303-3240-XXX
33	800	240	420	650	800	900		77303-3340-XXX
34	900	260	480	750	900	900		77303-3440-XXX

REF. 77303



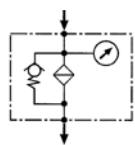
Visueel
Visuel
Visual

SERIE 30



REF.

77485-30

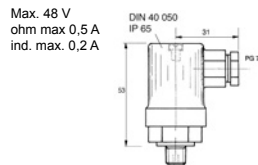


REF. 77303



Elektrisch
Électrique
Electrical

SERIE 80 & 81

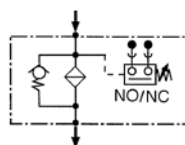


WV ±10%

REF.

1,3 BAR NO 1171-80-001

1,3 BAR NC 1171-81-001

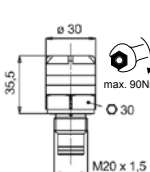


REF. 77303



Visueel
ΔP Visuel
Visual

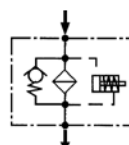
SERIE 5



WV ±10%

REF.

ΔP 1,3 BAR 77486-5B

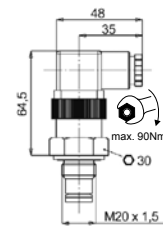


REF. 77303



Elektrisch
ΔP Électrique
Electrical

SERIE 6

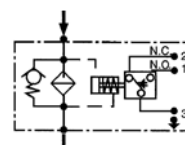


WV ±10%

REF.

ΔP 1,3 BAR 77486-6B

Max. A.C. 250V: 1A
C.C. 14+30V: 4+3 A resp.
DIN 43650 IP 65

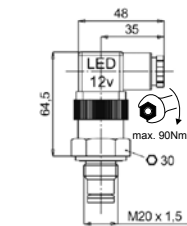


REF. 77303



Elektrisch+LED
ΔP Électrique+LED
Electrical+LED

SERIE 7

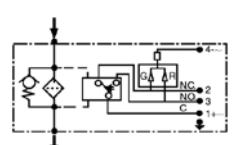


WV ±10%

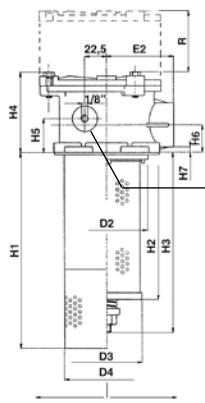
REF.

ΔP 1,3 BAR 77486-7B

Max. A.C. 250V: 1A
C.C. 14+30V: 4+3 A resp.
DIN 43650 IP 65

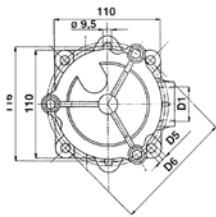


Ref. 77303-11
Ref. 77303-14

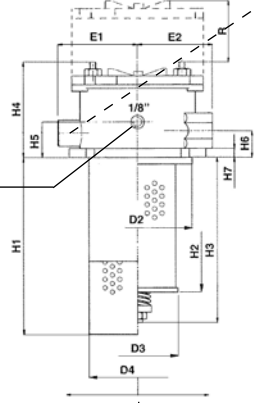


Met diffuser
Avec diffuseur
With diffuser

Optie: zonder diffuser
Option: sans diffuseur
Option: without diffuser

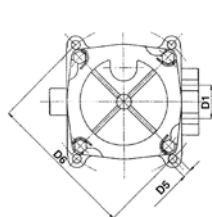


Ref. 77303-22
Ref. 77303-34

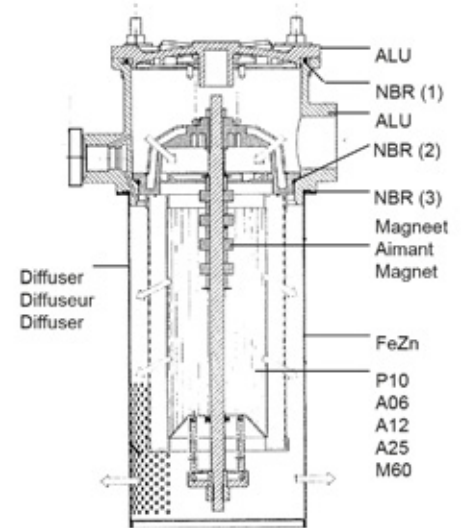


Met diffuser
Avec diffuseur
With diffuser

Optie: zonder diffuser
Option: sans diffuseur
Option: without diffuser



REF.
77303-22...-D
+
77303-34...-D
serie 5, 6 & 7

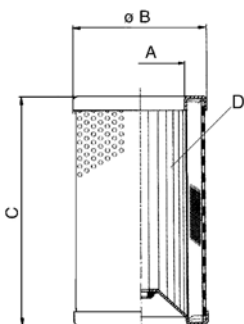


INSIDE TO OUTSIDE FILTRATION

		REF.
13.30		
11 + 14		77303-11-OR
22 + 24	NBR 1+2+3	77303-22-OR
31 + 34		77303-31-OR

Filterhuis met by-pass en diffuser: zonder element, indicator - Corps du filtre avec by-pass et diffuseur: sans élément, indicateur
Filter body with by-pass and diffuser: without element, indicator

D1 BSPP SAE 3000	D2	D3	D4	D5	D6	E1	E2	H1	H2	H3	H4	H5	H6	H7	R	METR.	I2	I3	kg		13.30	11	30/80/81	REF.
G3/4																								77303-1112
G1	90	72	89	9	126	-	68	198	106	140	90	38	28 + 32	6	230				1,2					77303-1116
G1.1/4																								77303-1120
G3/4																								77303-1212
G1	90	72	89	9	126	-	68	198	150	185	90	38	28 + 32	6	275				1,4					77303-1216
G1.1/4																								77303-1220
G3/4																								77303-1312
G1	90	72	89	9	126	-	68	250	200	235	90	38	28 + 32	6	325				1,5					77303-1316
G1.1/4																								77303-1320
G3/4																								77303-1412
G1	90	72	89	9	126	-	68	350	300	335	90	38	28 + 32	6	445				1,7					77303-1416
G1.1/4																								77303-1420
G1.1/2								250	190	225														77303-2224
G1.1/2	130	106	133	11	175	100	90	320	260	295	129	50	36	12	380	M12	70	35,7	4,2	22				77303-2324
G1.1/2								525	465	500					580				5,0	24				77303-2424
SAE 2.1/2"								290	210	260					350				8,0	31				77303-3140SM
SAE 2.1/2"	162,5	126	165,5	13	215 + 220	113	110	370	290	340	155	55	55	14	430	M12	89	50,8	8,4	32				77303-3240SM
SAE 2.1/2"								470	390	440					580				8,6	33				77303-3340SM
SAE 2.1/2"								560	480	530					620				9,1	34				77303-3440SM



Element - Élément - Element											
A	B	C	D (cm2) P10	REF.	D (cm2) A06+A25	REF.			D (cm2) M60	REF.	
				P10µ		A7µ	A12µ	A21µ		M60µ	
11	45	72	106	1250	77303-11-P10	770	77303-11-A06	77303-11-A12	77303-11-A25	460	77303-11-M060
12	45	72	150	1800	77303-12-P10	1170	77303-12-A06	77303-12-A12	77303-12-A25	650	77303-12-M060
13	45	72	200	2450	77303-13-P10	1570	77303-13-A06	77303-13-A12	77303-13-A25	880	77303-13-M060
14	45	72	300	3600	77303-14-P10	2370	77303-14-A06	77303-14-A12	77303-14-A25	1320	77303-14-M060
22	72	106	190	4600	77303-22-P10	3900	77303-22-A06	77303-22-A12	77303-22-A25	1500	77303-22-M060
23	72	106	260	6400	77303-23-P10	5400	77303-23-A06	77303-23-A12	77303-23-A25	2050	77303-23-M060
24	72	106	465	11800	77303-24-P10	9700	77303-24-A06	77303-24-A12	77303-24-A25	3670	77303-24-M060
31	92	126	210	6650	77303-31-P10	5500	77303-31-A06	77303-31-A12	77303-31-A25	2250	77303-31-M060
32	92	126	290	9200	77303-32-P10	7700	77303-32-A06	77303-32-A12	77303-32-A25	3150	77303-32-M060
33	92	126	390	12400	77303-33-P10	10400	77303-33-A06	77303-33-A12	77303-33-A25	4250	77303-33-M060
34	92	126	480	15400	77303-34-P10	12800	77303-34-A06	77303-34-A12	77303-34-A25	5250	77303-34-M060

HYDROFLEX HYDRAULICS B.V.
t. +31 (0)186 620777
f. +31 (0)186 616007
e. sales@hydroflex.nl

HYDROFLEX HYDRAULICS BELGIUM N.V.
t. +32 (0)2 2674114
f. +32 (0)2 2674225
e. sales@hydroflex.be

HYDROFLEX HYDRAULICS ROTTERDAM B.V.
t. +31 (0)10 2839000
f. +31 (0)10 4952590
e. rotterdam@hydroflex.nl