

77302

TANK CARE

TANK-TOP

Retourfilter
Filtre de retour
Return line filter



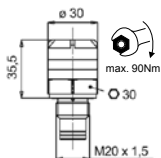
	20 BAR
	30 BAR
	60 BAR
	max. 1600 LPM (Visc. = 30cSt)
	-25/+110°C
	ΔP MAX. 10 BAR
	By-pass 3 BAR (±10%)
	G1/2" ÷ G3.1/2"
	P10-P25 A03-A06-A12-A25 REF. 77205
	HH-HL-HM-HR-HV-HG, acc. ISO 6743/4

Filter met element - Filtre avec élément - Filter with element									
REF.	$\rightarrow Q \rightarrow$ LPM $\Delta P \pm 0,5$ BAR Medium: Visc. = 30 cSt - s.g. 0,9 ΔP Visc. 22cSt. Δ 100 cSt. + HH Computer Aided Filter design (CAF)								REF.
	P10μ XXX=P10	P25μ XXX=P25	A05μ XXX=A03	A07μ XXX=A06	A12μ XXX=A12	A21μ XXX=A25			
11	40	40	10	16	36	36			77302-1108-XXX
21	80	80	24	40	70	80			77302-2112-XXX
31	140	140	50	70	120	120			77302-3116-XXX
41	320	160	100	240	300	320			77302-4124-XXX
51	700	700	300	500	600	800			77302-5140-XXX
61	1600	1600	800	1000	1200	1500			77302-6156-XXX

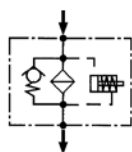
REF. 77302



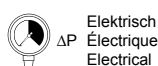
SERIE 5



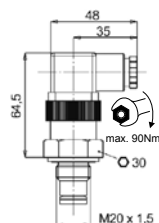
$\Delta P \pm 10\%$	REF.
ΔP 2 BAR	77486-5C



REF. 77302

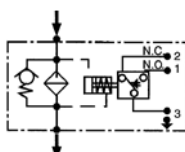


SERIE 6

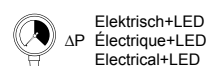


$\Delta P \pm 10\%$	REF.
ΔP 2 BAR	77486-6C

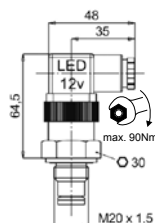
Max. A.C. 250V: 1A
C.C. 14+30V: 4+3 A resp.
DIN 43650 IP 65



REF. 77302

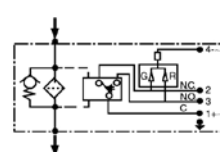


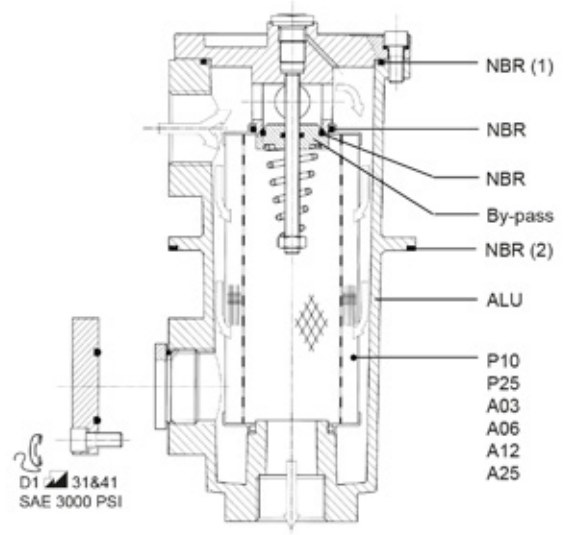
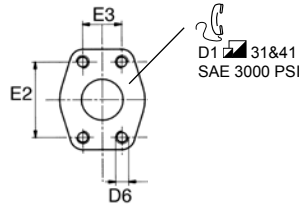
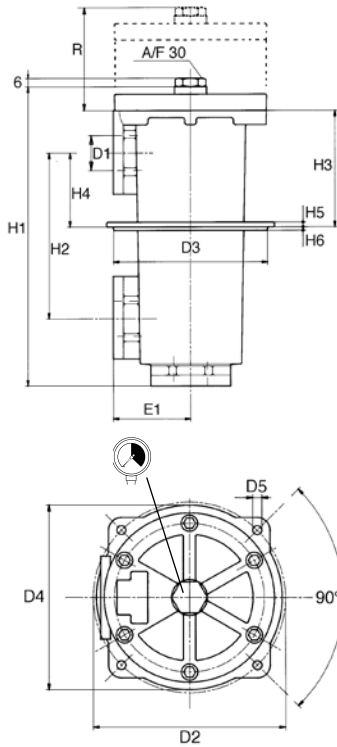
SERIE 7



$\Delta P \pm 10\%$	REF.
ΔP 2 BAR	77486-7C

Max. A.C. 250V: 1A
C.C. 14+30V: 4+3 A resp.
DIN 43650 IP 65

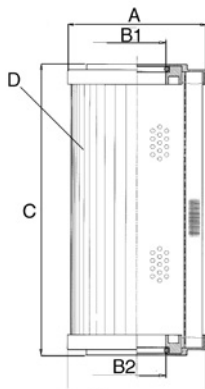




13.28	REF.
11	77205-11-OR
21	77205-21-OR
31	NBR 1+2 77205-31-OR
41	77205-41-OR
51	77205-51-OR
61	77205-61-OR

Filterhuis met by-pass: zonder element, indicator - Corps du filtre avec by-pass: sans élément, indicateur - Filter body with by-pass: without element, indicator

D1 BSPP SAE 3000	D2	D3	D4	D5	D6 METR.	E1	E2	E3	H1	H2	H3	H4	H5	H6	R	kg	13.28	Series	REF.
G1/2	95	83,5	90	5,5	-	43	-	-	160	62,5	96	31,5	4	3	405	1,3	11	5/6/7	77302-1108
G3/4	138	121	128	6,5	-	57	-	-	191	105	100	52	6	3	110	2,6	21	5/6/7	77302-2112
G1	154	135	147	6,5	M10	67	52,4	26,2	250	140	117	63	8	4	155	3,7	31	5/6/7	77302-3116
G1.1/2	180	162	174	8,5	M12	82	70	35,7	323	177	155	82	8	4	240	6,5	41	5/6/7	77302-4124
SAE 2.1/2"	275	237	254	10,5	M12	117,5	88,9	50,8	420	218	192	91	10	8	275	14,2	51	5/6/7	77302-5140SM
SAE 3.1/2"	275	237	300	14,5	M16	178	120,7	69,9	673	-	248	130	10	5	525	49,0	61	5/6/7	77302-6156SM



Element - Élément - Element									
13.28	A	B1	B2	C	D (cm2) P10-P25	REF.			
						P10μ	P25μ		
11	52	28	24	70	380	77302-11-P10	77302-11-P25		
21	70	34	34	85	990	77302-21-P10	77302-21-P25		
31	70	34	34	130	1600	77302-31-P10	77302-31-P25		
41	99	51	51	211	4280	77302-41-P10	77302-41-P25		
51	130	74	74	251	8350	77302-51-P10	77302-51-P25		
61	130	74	85	500	17600	77302-61-P10	77302-61-P25		

Element - Élément - Element									
13.28	A	B1	B2	C	D (cm2) A03+A25	REF.			
						A05μ	A07μ	A12μ	A21μ
11	52	28	24	70	310	77302-11-A03	77302-11-A06	77302-11-A12	77302-11-A25
21	70	34	34	85	620	77302-21-A03	77302-21-A06	77302-21-A12	77302-21-A25
31	70	34	34	130	1000	77302-31-A03	77302-31-A06	77302-31-A12	77302-31-A25
41	99	51	51	211	3800	77302-41-A03	77302-41-A06	77302-41-A12	77302-41-A25
51	130	74	74	251	7930	77302-51-A03	77302-51-A06	77302-51-A12	77302-51-A25
61	130	74	85	500	16720	77302-61-A03	77302-61-A06	77302-61-A12	77302-61-A25

HYDROFLEX HYDRAULICS B.V.
t. +31 (0)186 620777
f. +31 (0)186 616007
e. sales@hydroflex.nl

HYDROFLEX HYDRAULICS BELGIUM N.V.
t. +32 (0)2 2674114
f. +32 (0)2 2674225
e. sales@hydroflex.be

HYDROFLEX HYDRAULICS ROTTERDAM B.V.
t. +31 (0)10 2839000
f. +31 (0)10 4952590
e. rotterdam@hydroflex.nl