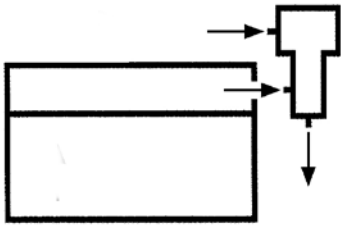


# 77205

PUMP CARE

TANK-TOP

Zuigfilter  
Filtre d'aspiration  
Suction filter

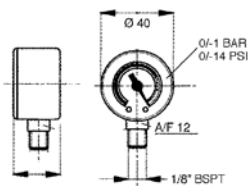


	20 BAR
	30 BAR
	60 BAR
	max. 480 LPM (Visc. = 30cSt)
	-25/+110°C
	ΔP MAX. 10 BAR
	By-pass 0,35 BAR (±10%)
	G1/2" ÷ G1.1/2"
	M60-M90-M250, → ← REF.77302
	HH-HL-HM-HR-HV-HG, acc. ISO 6743/4

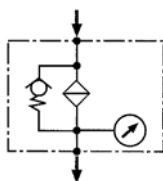
Filter met element - Filtre avec élément - Filter with element								
	→ Q ← LPM ΔP ± 0,03 BAR Medium: Visc.= 30 cSt - s.g. 0,9 ΔP Visc. 22cSt. Δ 100 cSt. +  HH Computer Aided Filter design (CAF)							REF.
	M60μ XXX=M060	M90μ XXX=M090	M250μ XXX=M250					
11	16	16	16					77205-1108-XXX
21	30	30	30					77205-2112-XXX
31	60	60	60					77205-3116-XXX
41	120	120	120					77205-4124-XXX
51	220	220	220					77205-5140-XXX
61	480	480	480					77205-6156-XXX

Visueel  
Visuel  
Visual

SERIE 11  
→ ← REF. 77205

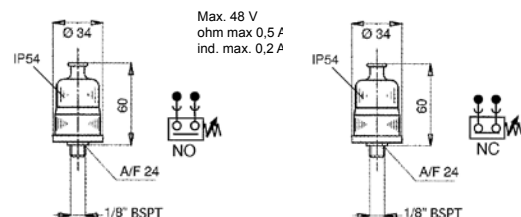


REF.
77481-11



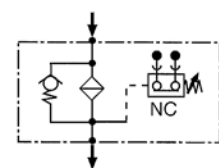
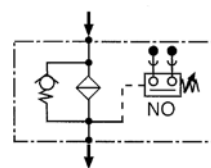
Elektrisch  
Électrique  
Electrical

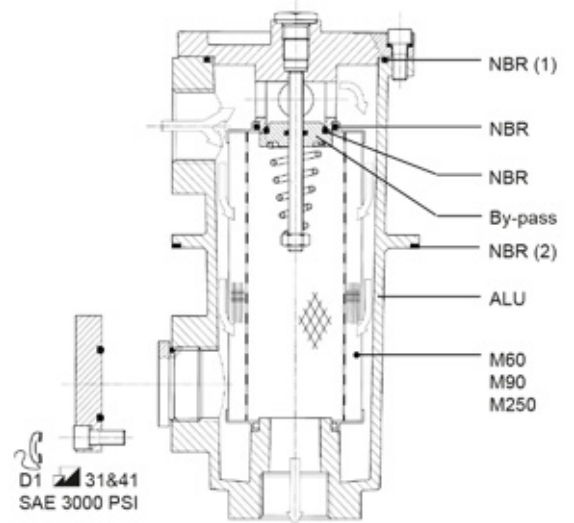
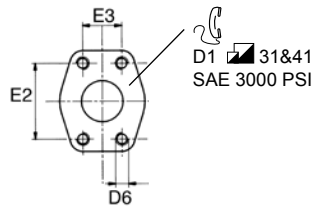
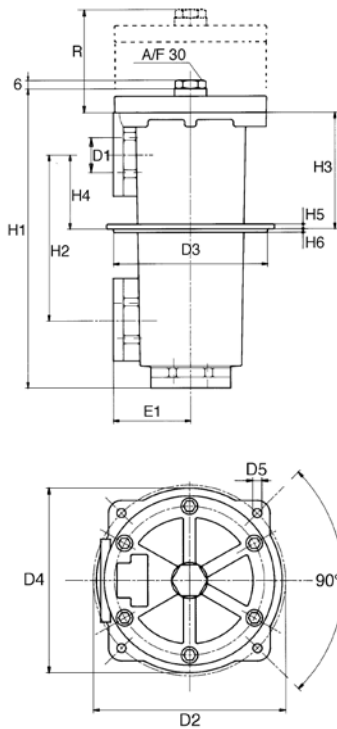
SERIE 20/22  
→ ← REF. 77205



±10%	REF.
-0,3 BAR	1171-35-002

±10%	REF.
-0,3 BAR	1171-34-002

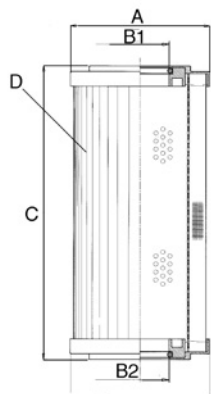




REF.	13.18	
11		77205-11-OR
21		77205-21-OR
31	NBR 1+2	77205-31-OR
41		77205-41-OR
51		77205-51-OR
61		77205-61-OR

Filterhuis met by-pass: zonder element, indicator - Corps du filtre avec by-pass: sans élément, indicateur - Filter body with by-pass: without element, indicator

D1 BSPP SAE 3000	D2	D3	D4	D5	D6 METR.	E1	E2	E3	H1	H2	H3	H4	H5	H6	R	kg	13.18	Series	REF.
G1/2	95	83,5	90	5,5	-	43	-	-	160	62,5	96	31,5	4	3	405	1,3	11	11/20/22	77205-1108
G3/4	138	121	128	6,5	-	57	-	-	191	105	100	52	6	3	110	2,6	21	11/20/22	77205-2112
G1	154	135	147	6,5	M10	67	52,4	26,2	250	140	117	63	8	4	155	3,7	31	11/20/22	77205-3116
G1.1/2	180	162	174	8,5	M12	82	70	35,7	323	177	155	82	8	4	240	6,5	41	11/20/22	77205-4124
SAE 2.1/2"	275	237	254	10,5	M12	117,5	88,9	50,8	420	218	192	91	10	8	275	14,2	51	11/20/22	77205-5140SM
SAE 3.1/2"	275	237	300	14,5	M16	178	120,7	69,9	673	-	248	130	10	5	525	49,0	61	11/20/22	77205-6156SM



13.18	Element - Élément - Element					REF.		
	A	B1	B2	C	D (cm2) M60-M90-M250	M60µ	M90µ	M250µ
11	52	28	24	70	310	77205-11-M060	77205-11-M090	77205-11-M250
21	70	34	34	85	620	77205-21-M060	77205-21-M090	77205-21-M250
31	70	34	34	130	1000	77205-31-M060	77205-31-M090	77205-31-M250
41	99	51	51	211	3800	77205-41-M060	77205-41-M090	77205-41-M250
51	130	74	74	251	7930	77205-51-M060	77205-51-M090	77205-51-M250
61	130	74	85	500	16720	77205-61-M060	77205-61-M090	77205-61-M250

M25µ

HYDROFLEX HYDRAULICS B.V.  
t. +31 (0)186 620777  
f. +31 (0)186 616007  
e. sales@hydroflex.nl

HYDROFLEX HYDRAULICS BELGIUM N.V.  
t. +32 (0)2 2674114  
f. +32 (0)2 2674225  
e. sales@hydroflex.be

HYDROFLEX HYDRAULICS ROTTERDAM B.V.  
t. +31 (0)10 2839000  
f. +31 (0)10 4952590  
e. rotterdam@hydroflex.nl